



## 2 Fitzherbert Cottages Early Lane, Swynnerton, Stone, Staffordshire, ST15 0RB

PET FRIENDLY RENTAL. A picture-perfect cottage in a sought after village location close to Stone. The property is centrally located within the village, strolling distance from the Fitzherbert Arms, village church, the cricket club and has some lovely countryside quite literally on the doorstep. Offering spacious accommodation including: living room with wood burning stove, traditional style kitchen with space for a breakfast table, three bedrooms, ensuite shower room and a bathroom. Also benefitting from an easily managed garden, generous off road parking, uPVC double glazed windows and oil fired central heating.

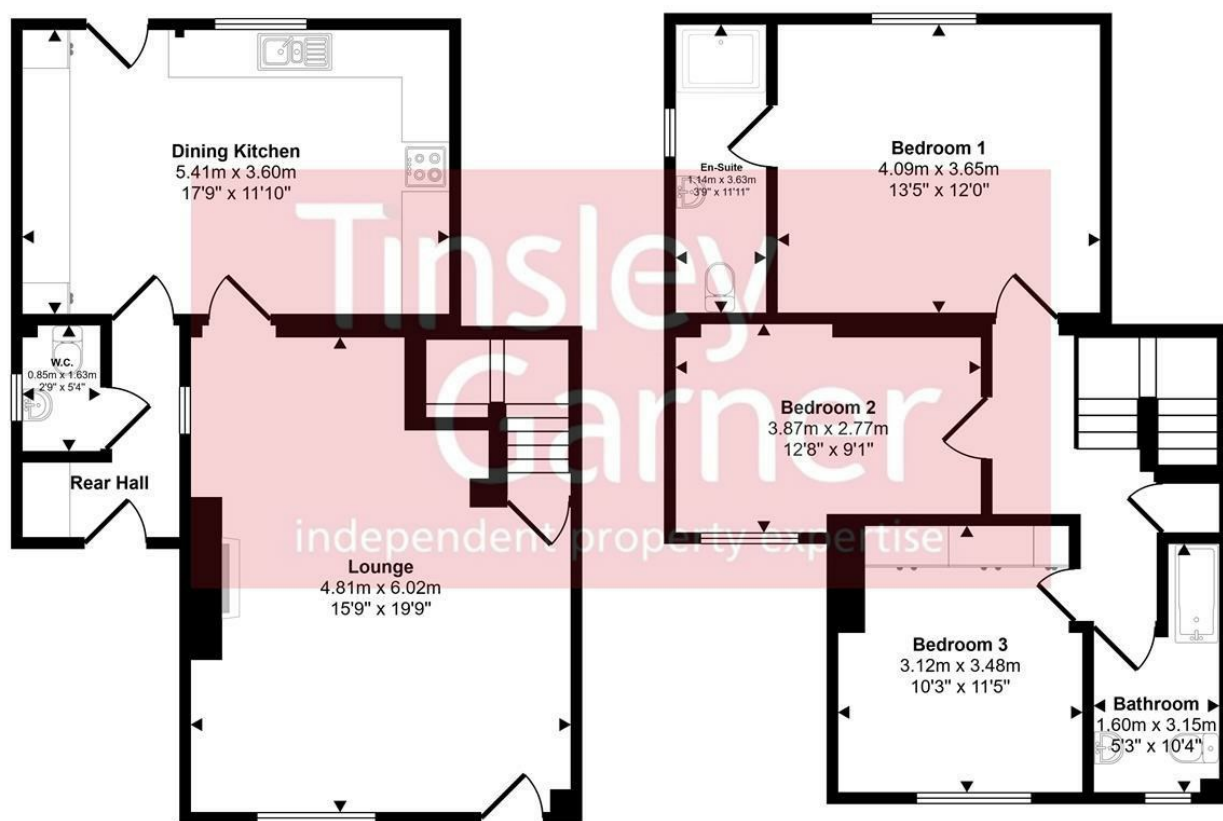
This is a really lovely house in a super location.

Unfurnished - Available immediately.

Pets will be considered.

**£1,250 PCM**

Approx Gross Internal Area  
110 sq m / 1184 sq ft



Ground Floor  
Approx 55 sq m / 591 sq ft

First Floor  
Approx 55 sq m / 592 sq ft

This floorplan is only for illustrative purposes and is not to scale. Measurements of rooms, doors, windows, and any items are approximate and no responsibility is taken for any error, omission or mis-statement. Icons of items such as bathroom suites are representations only and may not look like the real items. Made with Made Snappy 360.

